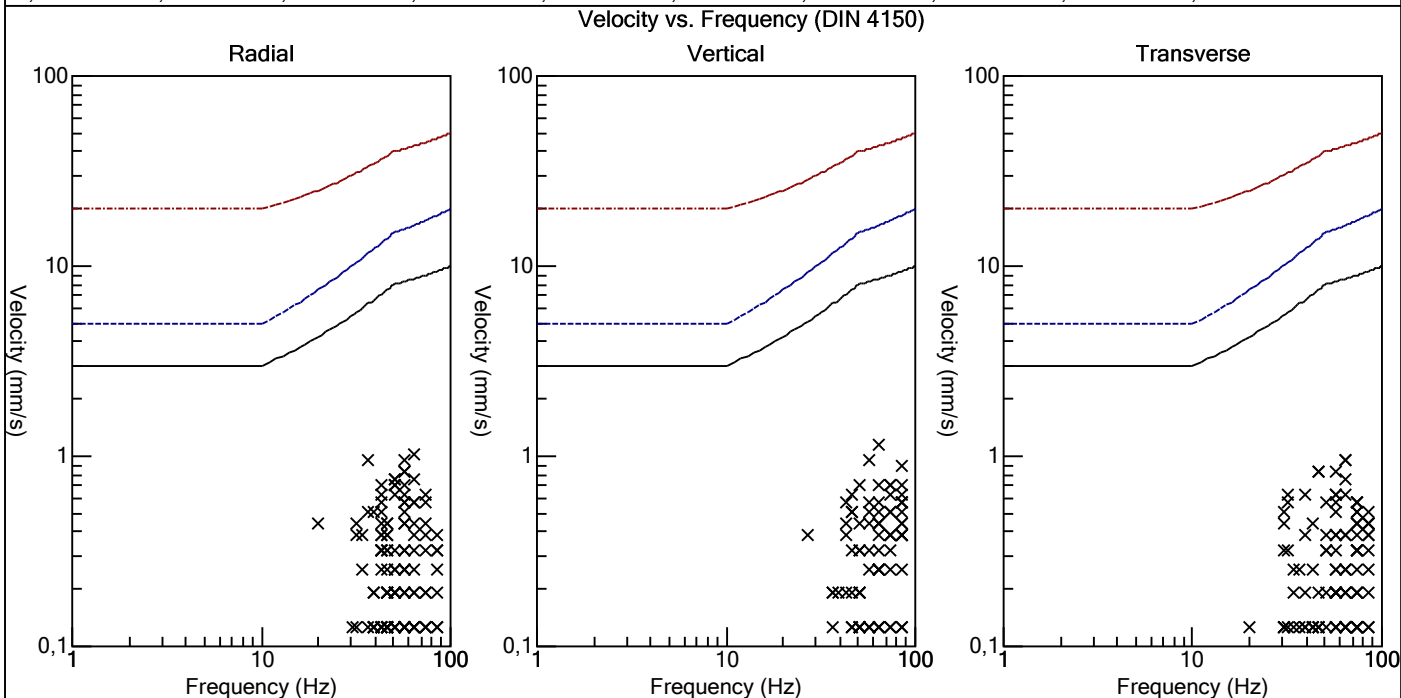
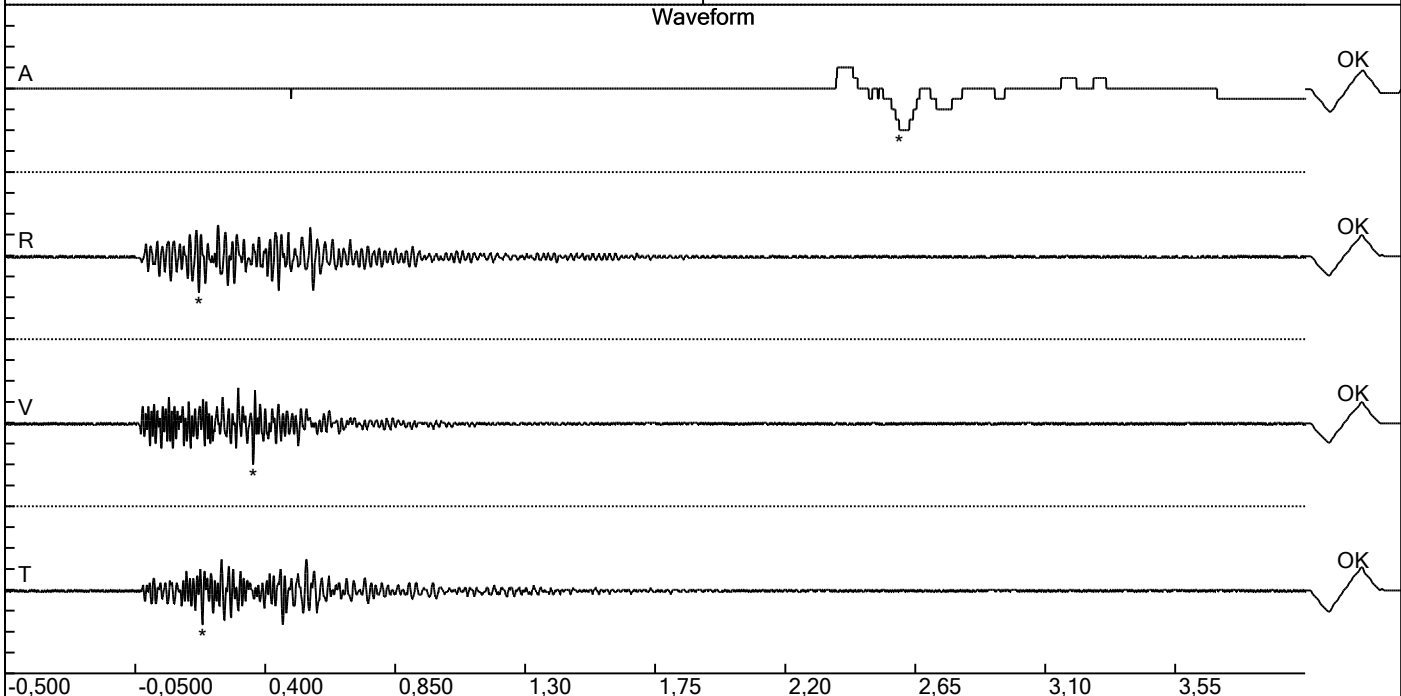


Carrière de BRS  
 Comblain/Fraiture -4  
 Tir du 26/10/2018  
 Sismographe placé au  
 261 Halleux  
 4710 Comblain-au-Pont

Record: 1789201810261400095.dtb  
 Number: 095  
 Seismograph: Mini-Seis  
 Type of Record: Waveform  
 Date: 26-10-18 14:00:00  
 SN: 1789  
 Duration: 4,50 Seconds  
 Sample Rate: 1024  
 Pre-Trigger: 0,5 Seconds  
 Seismic Trigger: 0,508 mm/s  
 Acoustic Trigger: 142,1 dB  
 Voltage: 6,4

Peaks and Frequencies	Graph Information
PPV Maximum: 1,14 mm/s A: 112,0 dB @ 5,1 Hz (2,59 s) R: 1,02 mm/s @ 64,0 Hz (0,171 s) V: 1,14 mm/s @ 64,0 Hz (0,358 s) T: 0,953 mm/s @ 64,0 Hz (0,183 s) Last Calibration Date: 05	Time Range: -0,500 s to 4,00 s Acoustic Scale: 0,0400 Mb/div Seismic Scale: 0,570 mm/s/div Time Intervals: 0,450 Seconds



Carrière de BRS  
 Comblain/Fraiture -4  
 Tir du 26/10/2018  
 Sismographe placé au  
 261 Halleux  
 4710 Comblain-au-Pont

Record: 1789201810261400095.dtb  
 Number: 095  
 Seismograph: Mini-Seis  
 Type of Record: Waveform  
 Date: 26-10-18 14:00:00  
 SN: 1789  
 Duration: 4,50 Seconds  
 Sample Rate: 1024  
 Pre-Trigger: 0,5 Seconds  
 Seismic Trigger: 0,508 mm/s  
 Acoustic Trigger: 142,1 dB  
 Voltage: 6,4

Peaks and Frequencies	Graph Information
PPV Maximum: 1,14 mm/s A: 112,0 dB @ 5,1 Hz (2,59 s) R: 1,02 mm/s @ 64,0 Hz (0,171 s) V: 1,14 mm/s @ 64,0 Hz (0,358 s) T: 0,953 mm/s @ 64,0 Hz (0,183 s) Last Calibration Date: 05	Time Range: -0,500 s to 4,00 s Acoustic Scale: 0,0400 Mb/div Seismic Scale: 0,570 mm/s/div Time Intervals: 0,450 Seconds

